

## Replacing the Battery Window/Door Sensor PG9945

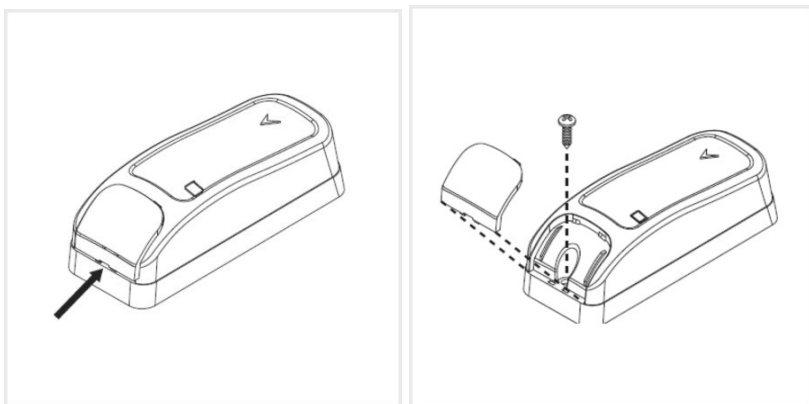
**CAUTION!** Risk of explosion if battery is replaced by an incorrect type. Dispose of used batteries according to the manufacturer's instructions.

**WARNING!** This product contains a coin battery. If it is swallowed, it can cause severe internal burns in just 2 hours and can lead to death. Keep new and used batteries away from children. If the battery compartment does not close securely, stop using the product and keep it away from children. If you think batteries might have been swallowed or placed inside any part of the body, seek immediate medical attention.

The DSC PG9945 door/window sensor requires a 3-volt lithium CR123A battery, which can be purchased at your local hardware, mass retailer, or battery store.

### Step-by-Step Instructions:

1. Locate the sensor with a low battery on either your system panel or in the Mobile App.
2. Insert a flat-edged screwdriver into the slot and push upward to remove the cover, then remove the screw and separate the cover from the base.



3. Remove and replace the 3-volt lithium CR123A battery.



4. Make sure the area where the batteries are stored is clean and there is no corrosion.
5. Put the cover back on starting with the opposite end from which it was opened, returning the screw then the outer cover. You should hear a snapping sound if it closes correctly.
6. Arm and disarm the system to clear the bypassed sensor.
7. Check if the low battery status has cleared from the panel memory.