

Replacing the Battery Door/Window Sensor DSC PG9303

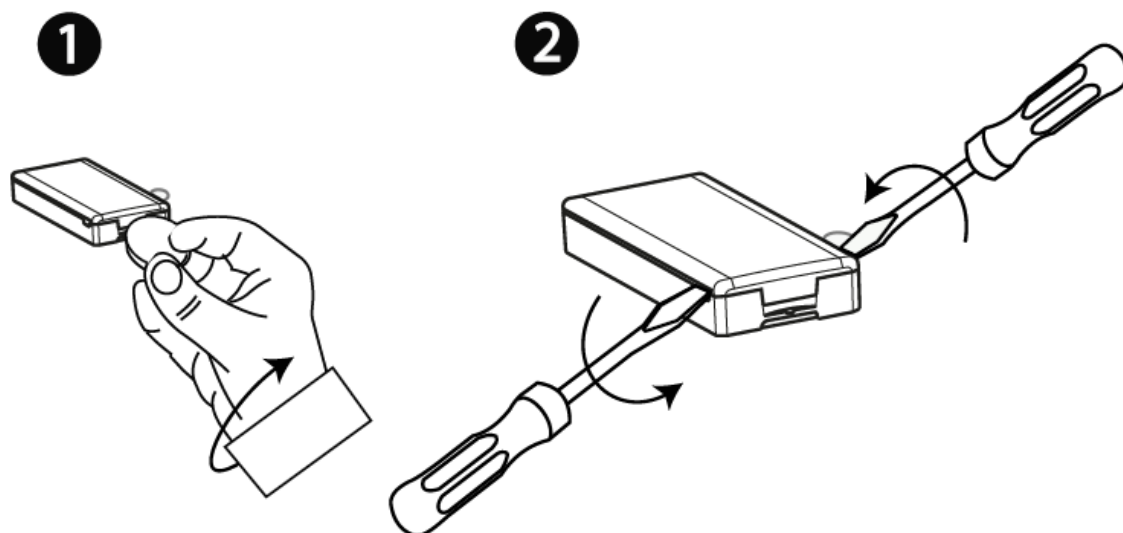
CAUTION! Risk of explosion if battery is replaced by an incorrect type. Dispose of used batteries according to the manufacturer's instructions.

WARNING! This product contains a coin battery. If it is swallowed, it can cause severe internal burns in just 2 hours and can lead to death. Keep new and used batteries away from children. If the battery compartment does not close securely, stop using the product and keep it away from children. If you think batteries might have been swallowed or placed inside any part of the body, seek immediate medical attention.

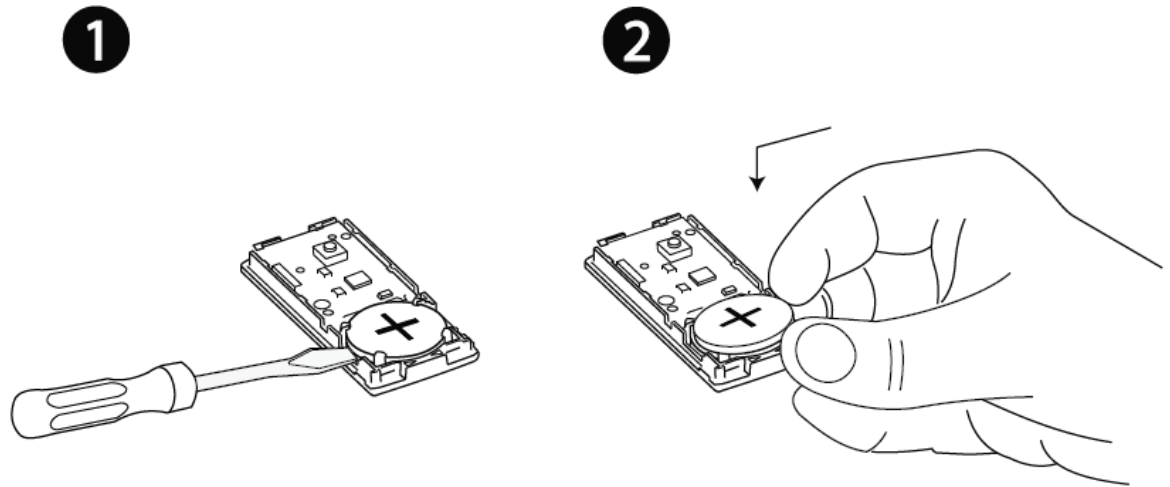
The DSC PG9303 door/window sensor requires a 3-volt lithium CR2450 Panasonic battery, which can be purchased at your local hardware, mass retailer, or battery store.

Step By Step Instructions:

1. Locate the sensor with a low battery on either your system panel or in the mobile app
2. Bypass the sensor on your panel following these instructions: **IQ Panel 2 - Bypass & Force Bypass Sensors.**
3. Open the cover by inserting a coin into the slot, then twist to remove. If a coin is not available, insert a 4mm flat screwdriver into each slot of the plastic cover, then twist to open each side



4. Remove and replace the 3-volt lithium CR2450 Panasonic battery.



5. Make sure the area where the batteries are stored is clean and there is no corrosion.
6. Place the cover back on starting with the opposite end from which it was opened. You should hear a snapping sound if it closes correctly.
7. Arm and disarm the system to clear the bypassed sensor.
8. Check if the low battery status has cleared or follow the link below for further instructions on clearing the error from the panel memory: **IQ Panel 2 System Sensor Status**.